



Marine Institute Vessel Activity 2010

R.V. CELTIC VOYAGER

- Successful delivery of 226 scientific days.
- 68 days of INFOMAR bathymetric surveys using EM3002D shallow water multi-beam.
- Eurofleets training programme completed (5 days).
- 3m vibrocorer used successfully from the RV Celtic Voyager in >100m water depth for intensive 64 station campaign.
- ROV program using UL Latis ROV completed from RV Celtic Voyager.



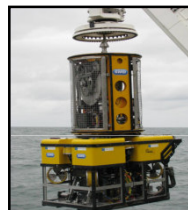
R.V. CELTIC EXPLORER

- Successful delivery of schedule for RV Celtic Explorer, total of 288 scientific days completed.
- 3 ROV Holland I surveys totalling 44 days completed.
- Commercial Survey of 56km pipeline route completed (turnkey project).
- 2 Mackerel Egg Surveys as well as annual Groundfish / acoustic programmes.



ROV HOLLAND I

- 3000m rated.
- 100hp hydraulic power.
- 2 x 7 f, 1 X 5 F manipulators.
- In service since January 2009.

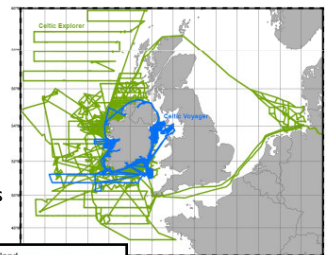


ROV Holland I

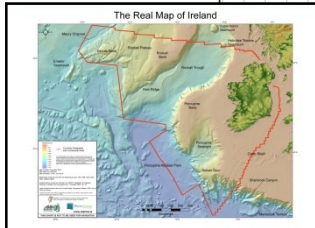
MODIFICATIONS / ACQUISITIONS / UPGRADES

- RV Celtic Explorer exposed hydraulic piping replaced due to corrosion issues.
- RV Celtic Explorer 2. 5 year refit completed at Milford Haven Dockyard.
- Survey Planning System fully operational for 2010 and proving very effective.

2010 Cruise Tracks

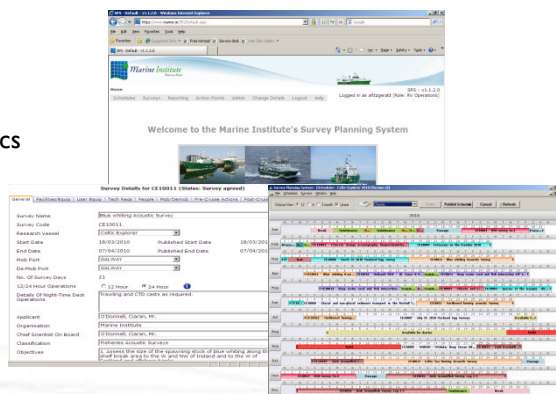


The Real Map of Ireland



ONLINE SURVEY PLANNING SYSTEM (SPS)

- Ship-time applications
- Scheduling
- Pre-cruise details
- Document management
- Survey details and logistics
- Post survey statistics
- Post cruise assessment



CHALLENGES FOR 2011...

- Funding issues in light of economic climate.
- Intense vessel schedules.
- Operations in North American waters.



Email: RV@marine.ie

Web: www.marine.ie