



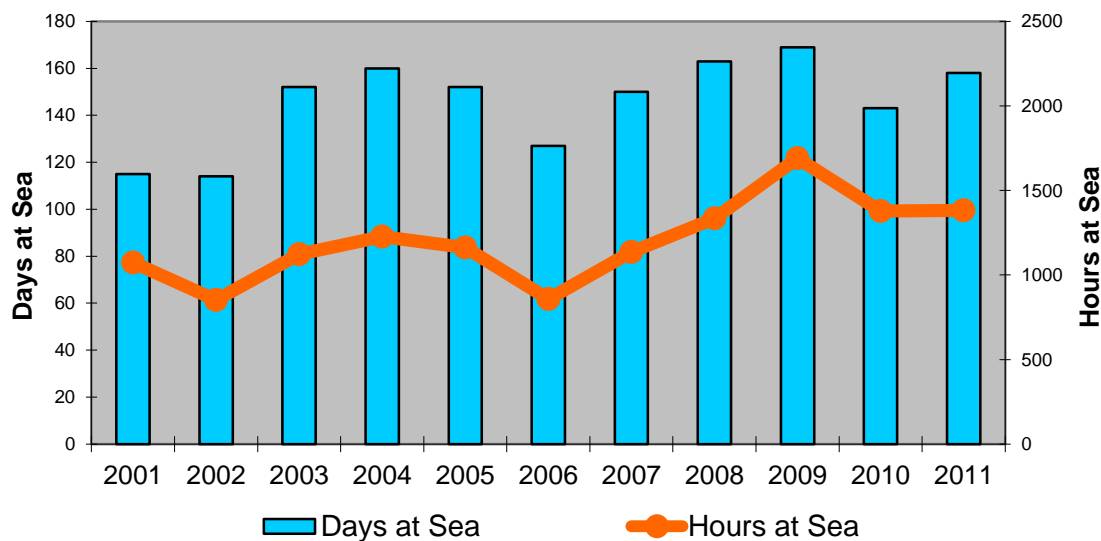
# RV ZEELEEUW / RV SIMON STEVIN

## ZEELEEUW

After serving the marine research community in Belgium for 12 years the RV Zeeleeuw stops its activity and will be decommissioned in 2013.

Its replacement the RV Simon Stevin will arrive in Oostende end of May and start science cruises in late summer – fall 2012.

## Activity Zeeleeuw



## SIMON STEVIN

36m L, 9.4m B, 3.5m draught

7 crew, 10 scientists

Ship equipped with

DP, Kongsberg EM2040 multibeam, ADCP

Diesel electric propulsion (ICES 209 below 8Kn)

Deck arrangements for 20 & 10 ft containers

Dry, wet & survey lab



## ROV GENESIS

University Gent bestowed VLIZ the ROV Genesis. This small ROV has been deployed for UGent and foreign researchers on various research ships worldwide. VLIZ will manage the ROV and adopt it for use in shallow North Sea environments. In cooperation with NIOZ the ROV will be made available for both Belgian & Dutch marine scientists and the international research community.

