

IMR Integrated Quality and Safety Management System

Per W. Nieuwejaar

pern@imr.no

Director IMR/RV Department

ERVO 2014

Background

- All cargo vessels above 500 GRT must base their operation on IMO conventions such as SOLAS incl ISPS, MARPOL and STCW, in addition to ISM (IMO regulations) and the ILO convention MLC.
- These conventions and regulations forms the basis of the IMR Safety Management System (SMS) which we established in 2001/2002.
- Starting point was the ERVO 2000 meeting in Galway, Ireland where Lloyds presented the ISM code and invited to a ISM training course in London and gave us a set of "strawman" documents to develop our own ISM system.
- We have since then continuously expanded the SMS iaw new conventions, new regulations ,and gained knowledge and experience.



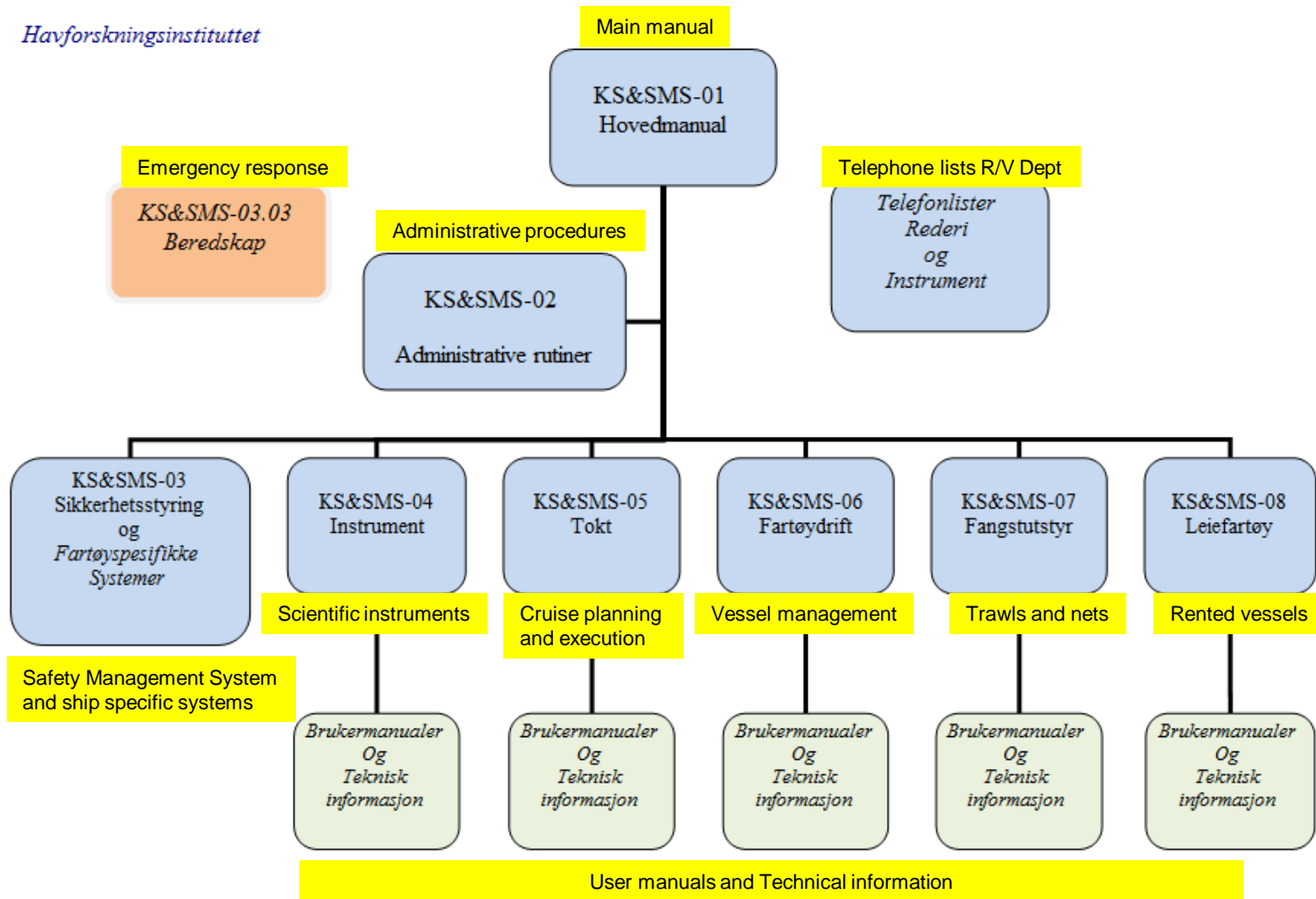
Quality Management System

- IMR/RV Department has developed and expanded on an internal non-certified QMS over many years to cover all activities regarding:
 - Vessel operations, maintenance, logistics, budget control etc
 - Scientific equipment operations, logistics, storage etc
 - Datahandling, data reduction, data storage and data transfer

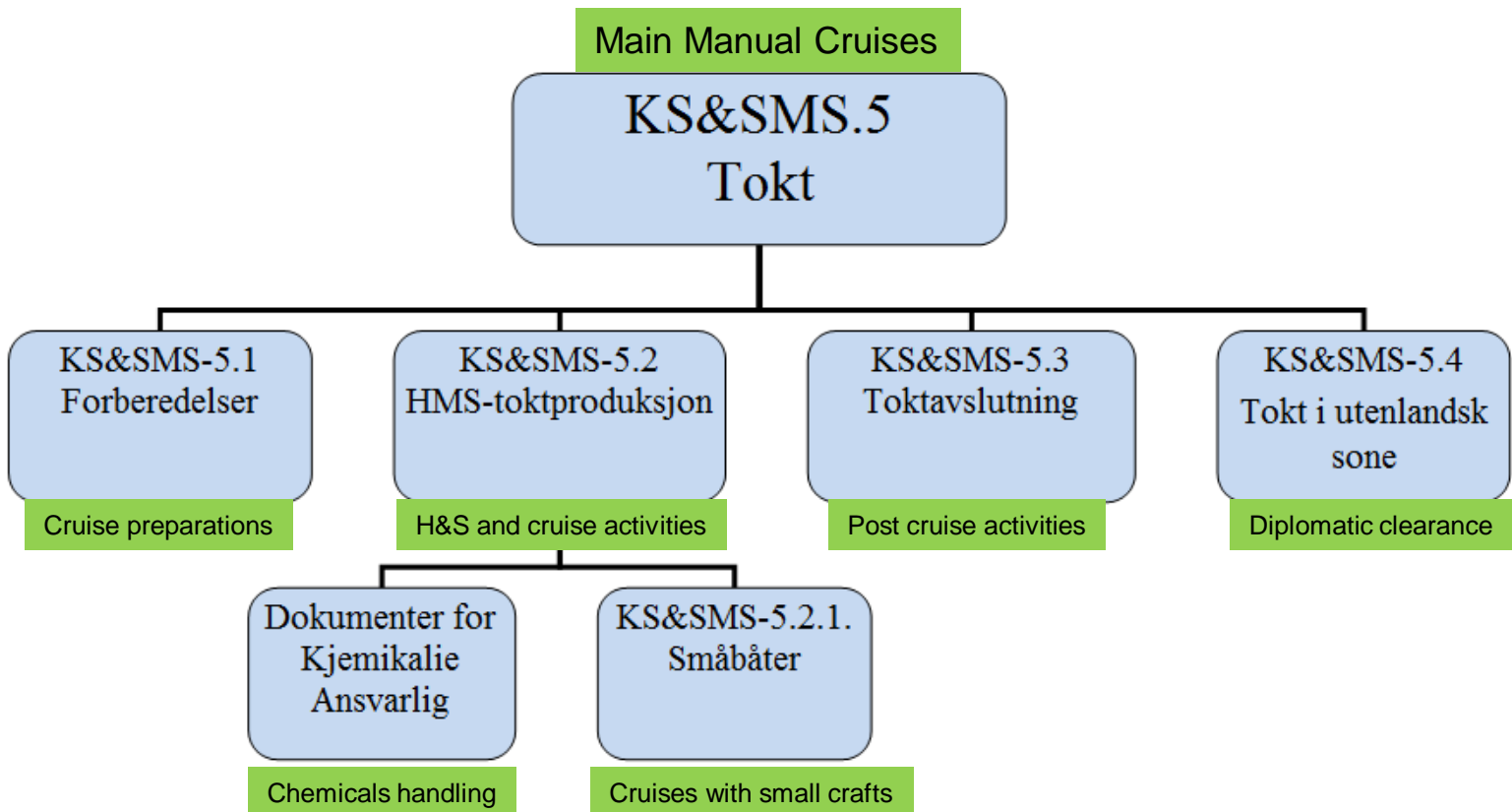


Web based quality management handbook

Havforskningsinstituttet



Cruise Planning and Execution



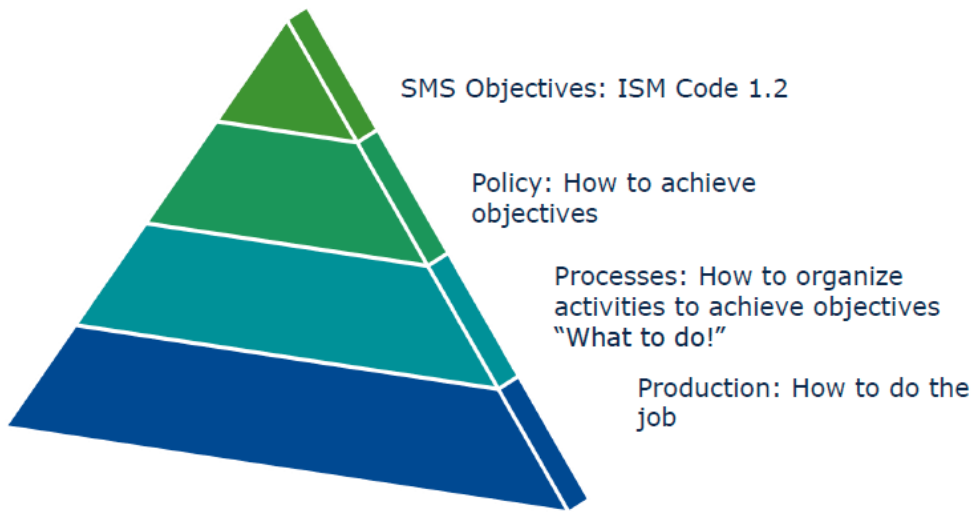
DNV GL Integrated QA & SMS



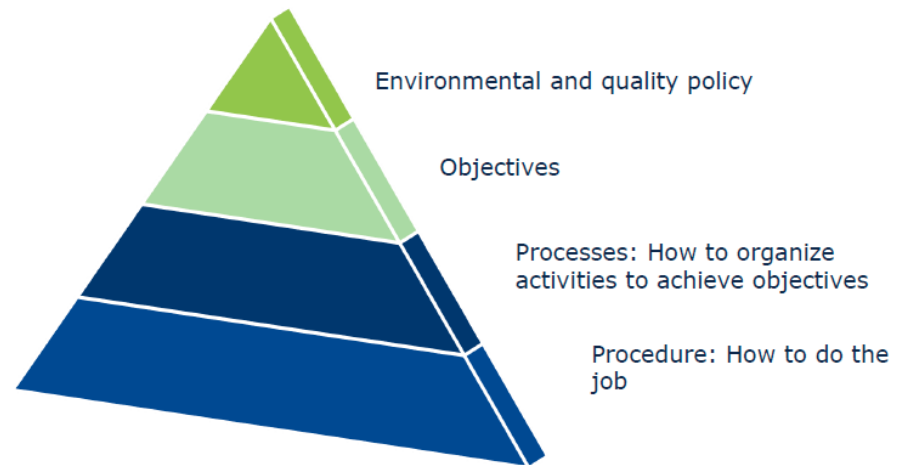
Certification project

- Formal project start: 23 May 2014
- Document review ISO 9001 + 14001 August 2014
- Initial audit ISM/ISO 9001 + 14001
(Focus: Implementation)
NLT 22 Nov 2014 or NLT 22 May 2015
- Sample audit initial stage:
1 large ship (2d) + 1 small ship (1d)
- Closing NCs (if any)
- Recommendation for certification
- Certificate !!!!





ISO 14001 / 9001





Integrated management systems Ship operating companies

Safety, Quality, Environment and Occupational Health and Safety

DNV Maritime



DET NORSKE VERITAS™

SEAMLESS

GUIDELINES FOR IMPLEMENTING AND AUDITING MANAGEMENT SYSTEMS INTEGRATING ISO AND ISM CERTIFICATION

Seamless certification provided by DNV

The maritime industry is increasingly turning to ISO standards to drive excellence and unlock its potential to meet and exceed customer expectations. This is in addition to the mandatory requirements in the ISM-code. There are many common requirements and a combination of these systems leads to efficient management of safety, quality, environmental issues, occupational health and safety, and energy performance. DNV provides certification for ISO 14001/9001/OHSAS 18001 as an Accredited Certification Body. ISO 50001 is offered as an unaccredited service. Through our specially trained Seamless auditors available at key locations worldwide, we are able to help our customers maintain ISO certifications while significantly reducing the cost and time required. Seamless certification is only available to companies holding a DNV issued Document of Compliance.

Rev, 1.3-2013

1 PART I - SHIP MANAGEMENT COMPANIES

1.1 Executive management

1.1.1 Objectives and policies

Many aspects of the requirements for policies and objectives are the same in the code and the standards. The top management shall define policies relevant to the nature of the business and as a framework for objectives and targets. As a minimum, objectives and targets should demonstrate the company's goals for health and safety protection, environmental concern, energy performance and labour relations. Additional objectives and targets are required by the various standards the company may be certified against. (Ref. 1.2; 1.4.1; 2.1; 2.2); (Ref. 5.1, 5.3; 5.4); (Ref. 4.2; 4.3.3; 4.4.3); (Ref. 4.2; 4.3.3; 4.4.3)

Energy objectives and targets will require the establishment of an energy baseline. (Ref 4.3; 4.4.4; 4.4.6)

ISM	9001:2008	14001:2004	OHSAS 18001	ISO 50001:2011	Functional requirements/areas to be considered
1.2	5.1	4.2	4.2	4.3	The policy and objectives should reflect the intention of the each of the standards.
1.4.1	5.3	<u>4.2</u>	4.2	4.4.4	Safety and environmental policy. <i>Objectives and targets of each relevant function and level.</i>
2.1	5.4.1	<u>4.3.3</u>	4.3.3	4.4.6	<u>Objectives and targets at each relevant function and level. Internal communication</u>
2.2		<u>4.4.3</u>	4.4.3		Objectives and targets at each relevant function and level. Internal communication. Objectives and targets at each relevant function, level based on baseline and energy review. Internal communication.





Questions?